



Botanical Adventure

Spring Summer 18 Collection

A collection inspired by the journey taken by Marianne North, a botanical artist, in the mid to late 1800s.

The collection explores florals from different parts of the world in a fashion context. It combines both screen and digital printed elements along with different drawing styles for each of the climates to give each print a different look and to help it better relate to that place.

Prints are bursting with vibrant colours all taken directly from the landscapes and florals that inspired the collection.

Garment shapes take inspiration from the glass houses and conservatories. Garments have a balanced combination of angular and smooth curved lines.

Indian Buildings



Indian Tiles - Victoria and Albert Museum

Indian Textile - Victoria and Albert Museum



A colour palette inspired by the colours found in indian architecture, landscapes and textiles.



Northern Lights



Reykjavik

A colour palette influenced by the icy landscapes and architecture of the nordic regions of Europe.



Sahara Desert



African Textiles - The British Museum



Colour inspired by the Sahara Desert and traditional African textiles.



The Waterlily House - Kew Gardens



Circle Jacket Block



Circle Jacket Toile



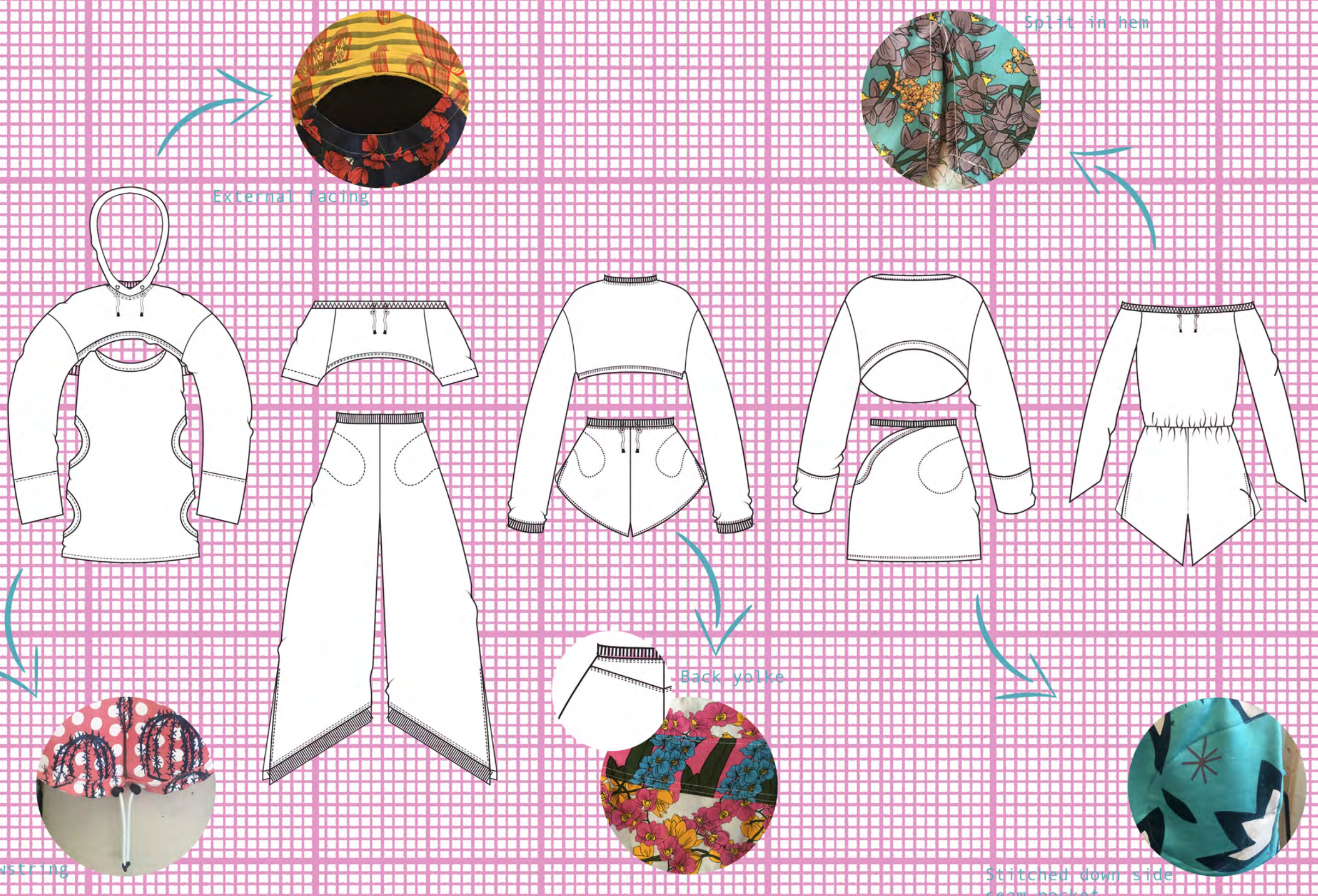
Dome Top Toile



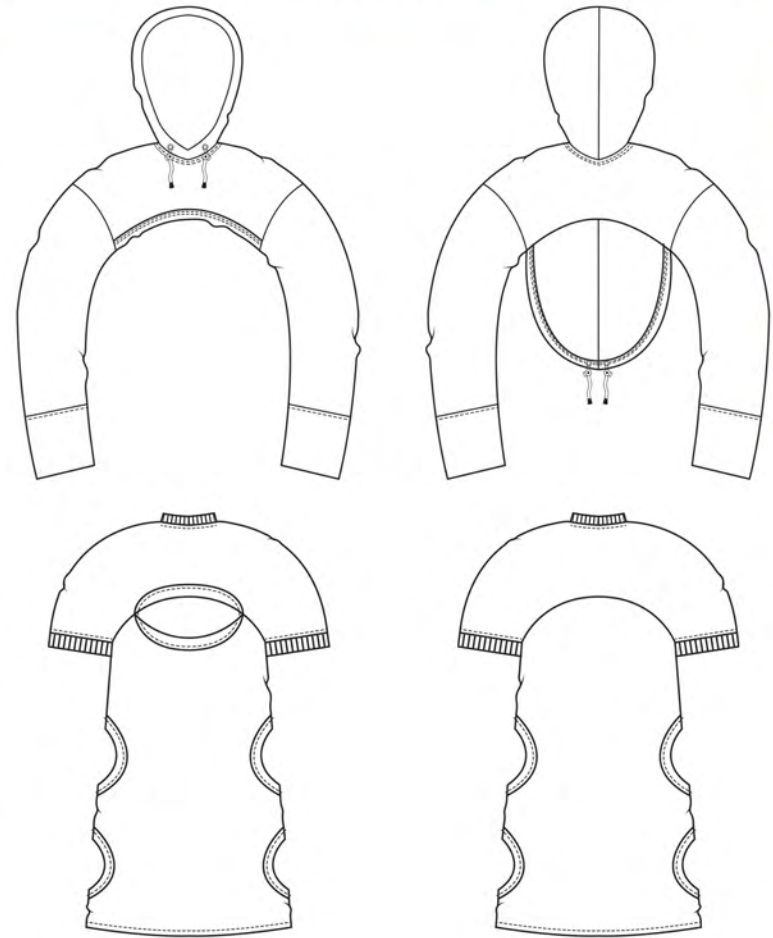
Dome Top Block



The Palm House - Kew Gardens

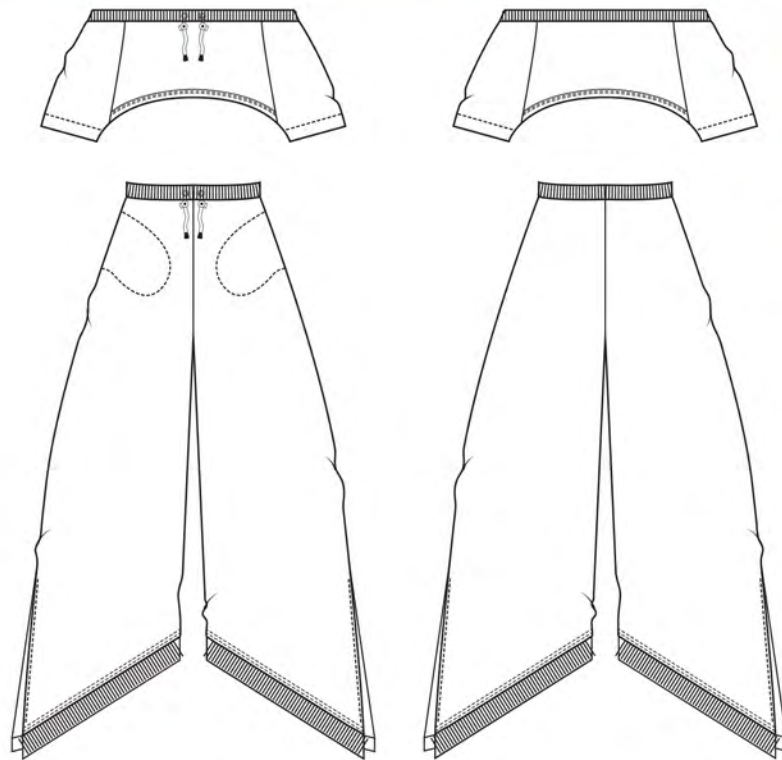






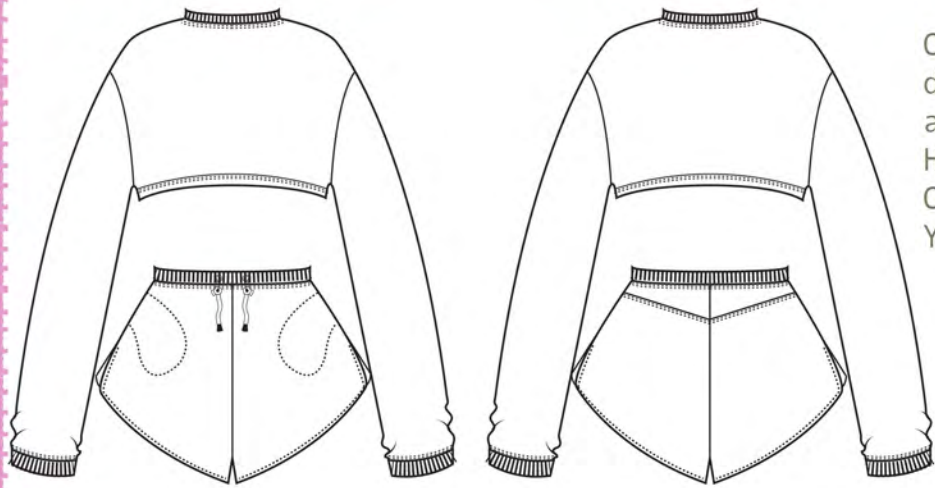
Circular cropped hooded top. Drawstring with toggle on the hood. Coverstitched detail around the neck and on the facings. External facing on the front and back hem. Yoke on the back. Bottom panel has a vent, external facings and drawstring.
Dome top shaped dress. Ribbing on neck and sleeves. Coverstitch detail on neck, sleeves and external facings. Cut out on the front with external facings. Four cut outs on the bottom section of the dress each with external facings.





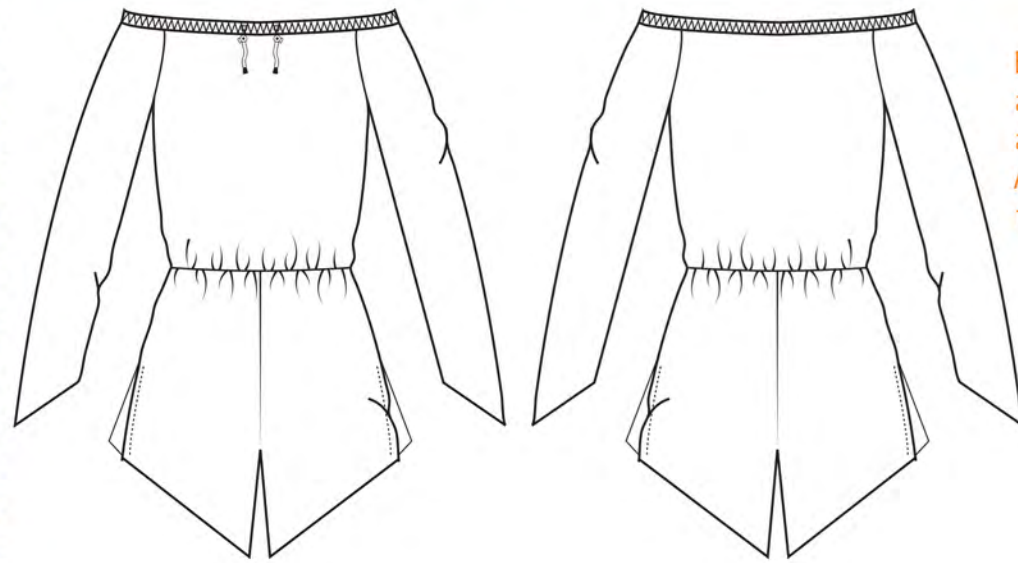
Bardot extreme crop top. External facing with drawstring across the top. External facings also on the hem of the top.
Asymmetric hemmed culottes. Ribbed waistband. Inset seam pockets top stitched to the front of the culottes. Slits at the hem in the side seam.





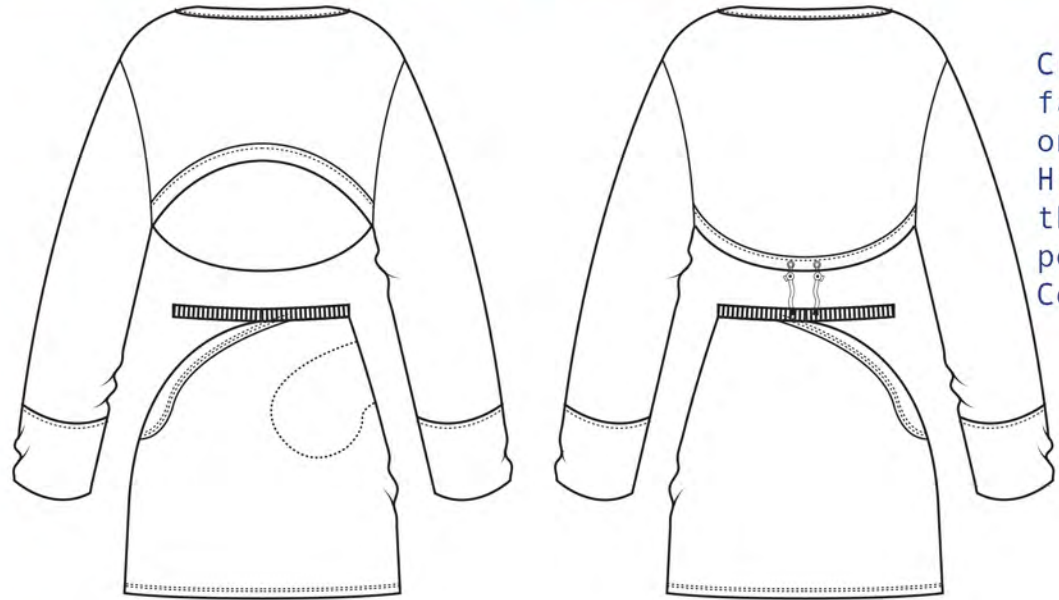
Cropped jumper with extended sleeves and dropped shoulder. Ribbing on the neck, cuffs and hem, with coverstitch detail.
High waisted shorts. Drawstring waistband. Curved asymmetric hem. Slits in the side seam. Yoke at the back of shorts.





Bardot playsuit. External facing with a drawstring at the top. Sleeves with asymetric hem. Elasticated waist. Asymetric hem on shorts and slit on the side seam.





Cropped top with asymmetric hem. External facings on the neck and hem. Turn up cuff on the sleeve. Dropped shoulder. High waisted A line skirt with cut out at the hip. External facing. Inset seam pocket top stitched to the skirt front. Coverstitch details.





Jocelyn Proust



Cambridge Botanical Gardens



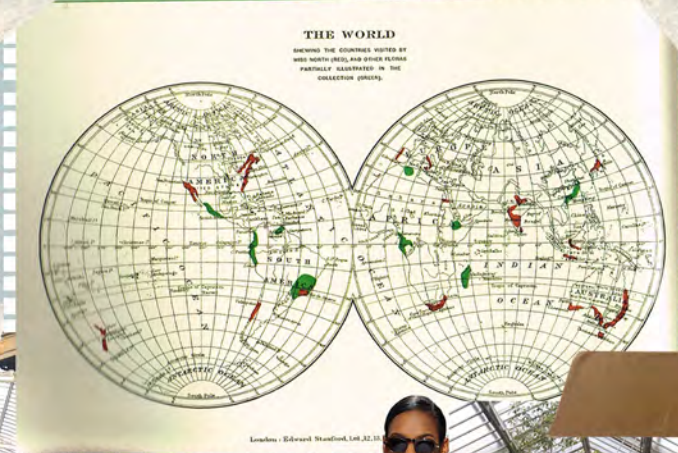
The Palm House - Kew Gardens



Orchid Festival - Kew Gardens



Map Showing Countries Visited by Marianne North



The Wonder Garden



Alexander Wang SS17



The Palm House, Kew Gardens

Dries Van Noten SS12



Marianne North Painting

Princess of Wales Conservatory, Kew Gardens

















